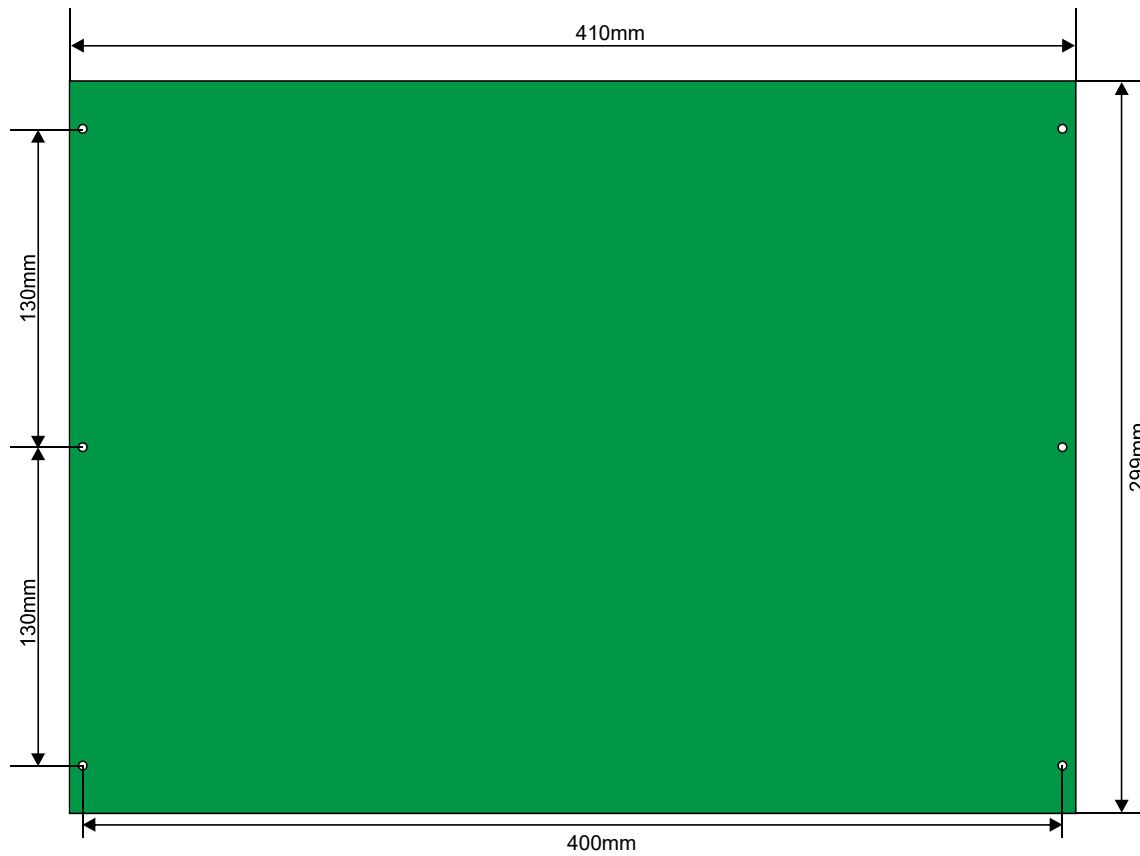


## PCB fixation positions for 19" enclosure

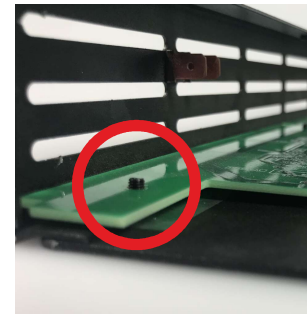


Instead of cutting holes in the enclosure bottom panel it is possible to use the existing screws.  
(the screws which fixes the bottom panel with the side panels)

If you think you need an extra fixing position for the pcb in the middle, you could just put a screw into a hole in the middle of the pcb without fixing it. This will avoid shortcuts to the enclosure.  
And if there are components on the front or rear, then the pcb is also fixed at these positions so maybe no additional fixing points are needed.

Advantages:

- + no need to drill holes yourself
- + reduce costs because the panel does not need to be cutted
- + you will get the absolutely lowest position for the pcb (so you can use the maximum possible height)



use existing screws to fix the pcb

